

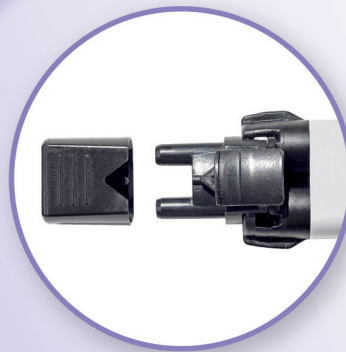
Obtury's

Root canal sealer

EASY TO USE

AUTOMIX

HANDMIX



Indications

Cement with an epoxy-amine base for the permanent obturation of root canals, to be used in association with gutta-percha points.

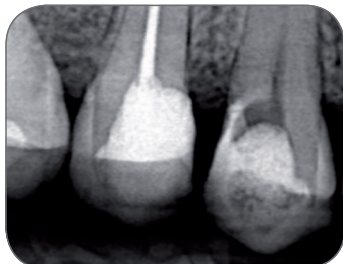
Advantages

- **Perfect sealing** for successful clinical cases
- Ideal consistency for easy implementation and excellent support around gutta percha points
- Easy excess removal in the pulp chamber for a simplified procedure
- Specific tips to prevent cross contamination
- **Biocompatible** & silver free
- No periapical tissue irritation
- No discoloring of teeth
- Low shrinkage and low solubility
- **No need primer**
- Easy to remove if necessary

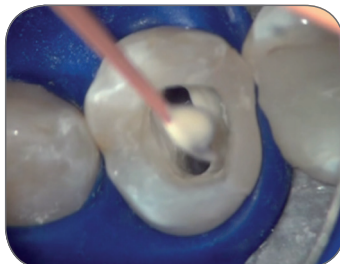
Clinical Excellence

ITENA[®]
CLINICAL PRODUCTS

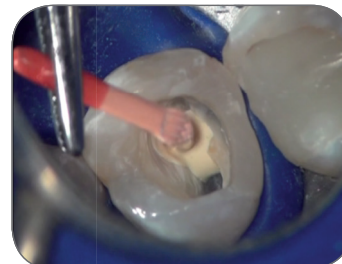
Clinical procedure



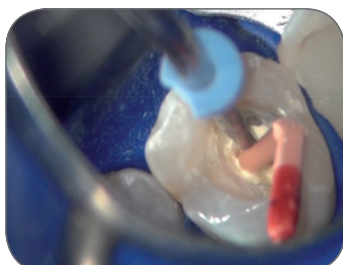
① First view.



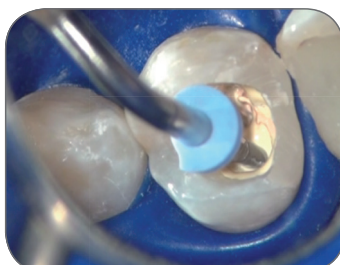
② Put a drop of Obturys on the gutta percha point. Cover the apical third of the gutta percha with Obturys.



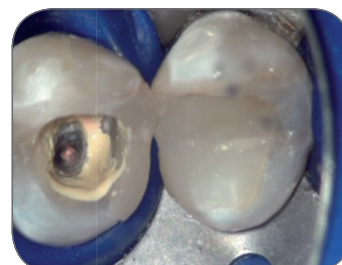
③ Cover the inside of the root canal with Obturys with the help of the gutta percha. Make vertical movements back and forth.



④ With a probe, cut the gutta percha which is out of the canal. Condense the gutta percha according to the selected method. Here section of the upper part of the point using a heating fulling mill.



⑤ Hot vertical condensation of the gutta percha.



⑥ Obturation of the apical third.

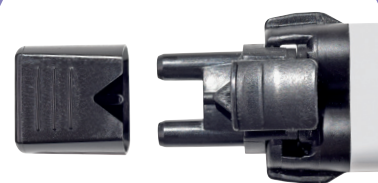


⑦ Obturation of the two third coronal section by injection of hot gutta.



⑧ Final radiography.

**MORE PRACTICAL
FOR THE
PRACTITIONER**



**HANDMIX TIP
WITH MARKED CAP TO PREVENT
CROSS CONTAMINATION**

REFERENCES

Obturys Automix

1 syringe Automix (5ml) + 10 mixing tips
+ 10 preassembled extra-fine intra oral tips
+ 1 mixing pad + instructions for use

OBAX1-5

Obturys Handmix

1 syringe (5ml) + 1 manual adaptator
+ 10 mixing spatulas + 1 mixing pad
+ instructions for use

OBHM1-5

TECHNICAL DATA

Shore hardness	66A
Working time	48 h in 37° C
Excellent radiopacity AI	3 mm
Dimensional stability	2,10%

CE
0120

Class IIa medical devices CE marking for dental healthcare.
For dental healthcare professional use only.
Instructions for use to be read carefully before using.
Date of creation : 31/08/2016

Laboratoire ITENA • 83 avenue Foch • 75116 Paris - France
Tel. : +33 145 913 006 • Email : contact@itena-clinical.com
www.itena-clinical.com

ITENA®
CLINICAL PRODUCTS