

# ENDO ACTIVATOR<sup>®</sup>

**AN EASY TO USE & SAFE SOLUTION  
TO ACTIVATE YOUR IRRIGATION**



*Safe • Effective • Simple*

***Designed by***

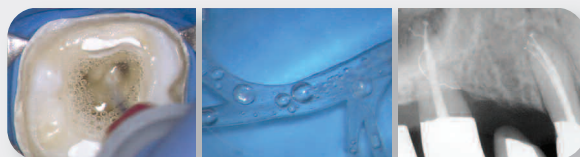
*Clifford J. Ruddle DDS,  
Robert H. Sharp DDS,  
Pierre Machtou DDS*

**DENTSPLY**  
**MAILLEFER**

# ENDO ACTIVATOR®

## ONE FACT

Fluid activation, in well-shaped canals, plays an important role in debridement and disinfection of the root canal system.



Courtesy of Clifford J. Ruddle DDS

## ONE SOLUTION

The EndoActivator® is designed to safely and vigorously energize intracanal irrigants during endodontic treatment.

## MULTIPLE BENEFITS

### SAFE

- Strong, flexible medical grade polymer tips
- Single patient use
- Uncoated & Non Cutting tips

### EFFECTIVE

- Creates fluid hydrodynamics
- Improves debridement and the disruption of the smear layer and biofilm

### SIMPLE

- Very simple clinical technique
- Intuitive Device
- Ideal in practice when portability is required



## SYSTEM KIT (REF A 0911) INCLUDES

- 1x EndoActivator® Handpiece/Driver (Battery Included) • REF A 0912
- Activator Tips  
25x Small (#15/.02), 25x Medium (#25/.04), 25x Large (#35/.04)
- 100 x Protective Barriers • REF A 0914
- 1x Directions for Use
- 1x Sequence Card
- 1x Instructional DVD

Possibility to order each part separately



SMALL - #15/.02 • REF A 0913 022 015 00

MEDIUM - #25/.04 • REF A 0913 022 025 00

LARGE - #35/.04 • REF A 0913 022 035 00

CE  
0086



Endo Inventions, LLC  
122 S. Patterson Avenue, Ste. 206  
Santa Barbara, CA 93111 USA



EMERGO EUROPE - Molenstraat 15,  
2513 BH, The Hague,  
The Netherlands

Dentsply Maillefer • CH-1338 Ballaigues • Switzerland • [www.dentsplymaillefer.com](http://www.dentsplymaillefer.com)

Distributed by:

**DENTSPLY**  
**MAILLEFER**

SPR/F1901117.E/01/2010 updated 06/2010